

### Universal regulator ETS

An universal device, that can be easily modified according to a customer demands. It contains a lot of slot and contacts for add-on modules. It can be used as an industrial processes regulator, the main supply parameter regulator, a measuring device, a data archiving device etc. It's manufactured in two versions – one is a panel mounted version and the other one is a moulding mounted version.



It can contain up to 20 inputs/outputs, a display, a serial interface, non-volatile data memory etc. Firmware upgrade can be done via a serial interface or a memory card resp.

### Many different applications run on the ETS, for example:

- ETS-JALO – Power factor regulator with energy meter pulse inputs
- ETS-AJA – Power factor regulator with current and voltage sensing inputs
- ETS-BEL – Converts DTMF codes from a telephone line to the relay driving outputs.

### LED information panels

We use 7-segment units of different sizes and colours built-in a metal box. Panel is controlled using PC or a dedicated device.



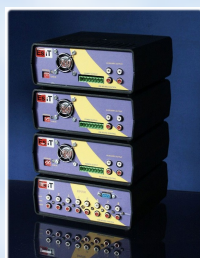
### AHR – dual proximity card reader

The device is able to communicate with the 125kHz and 13Mhz cards. It contains two inputs and two general purpose outputs, tri-colour LED and a buzzer. The reader can be work as a stand-alone device or as a slave device connected to a large system.



### EIB Sound controller

An intelligent device, that has the ability to transmit and process analogue signal. The device can process up to 8 stereo signals and transmits them to any output. Every output contains a power amplifier, corrections and a unit to create or improve the stereo effect.



The device is controlled via EIB bus or RS232 or RS485. When a converter TPC/IP – serial line is connected to the device, it is possible to use the web interface to control the device.

### M-BOX - data acquisition and control device

M-BOX collects data and measured values and writes them to a high capacity media. It communicates via serial interface and supports various protocols at various data rates. It has the ability to carry out simple measurement and regulation using its own inputs and outputs. The firmware upgrade is done by copying appropriate files to a memory cards and just inserting the card into the slot of the device.



It is manufactured in two versions:

- UniLog** - industrial version, which is supposed to be mounted to a DIN moulding. It has galvanically insulated RS485 and RS232 interface, inputs, outputs.
- OEMLog** - embedded module. A DOS-like system services. Possibility to use built-in peripherals.



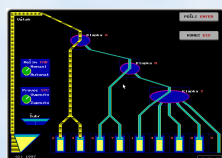
### Optoinsulating interface ETI

Universal interface used for galvanic splitting of the measuring, monitoring and regulating circuits.



### Infra-red reader IRED-232 a IRED-USB

It is used for optical transfer of data from various kind of measuring appliances to the RS232 or USB port of PC.



### Services

- Component design and manufacture used for control and regulation.
- Electro technical project management
- Development project management
- Visualization of technological processes
- Design and development of a regulation software.

